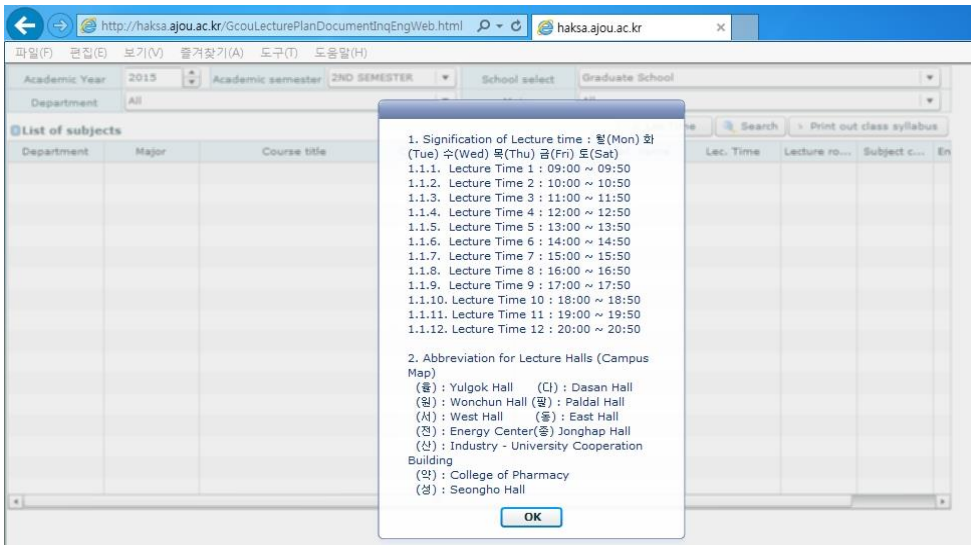
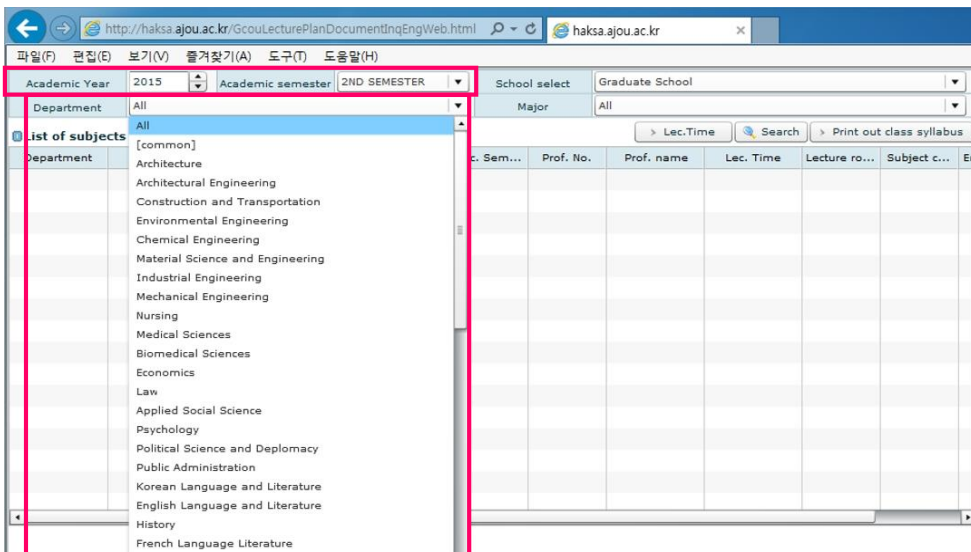


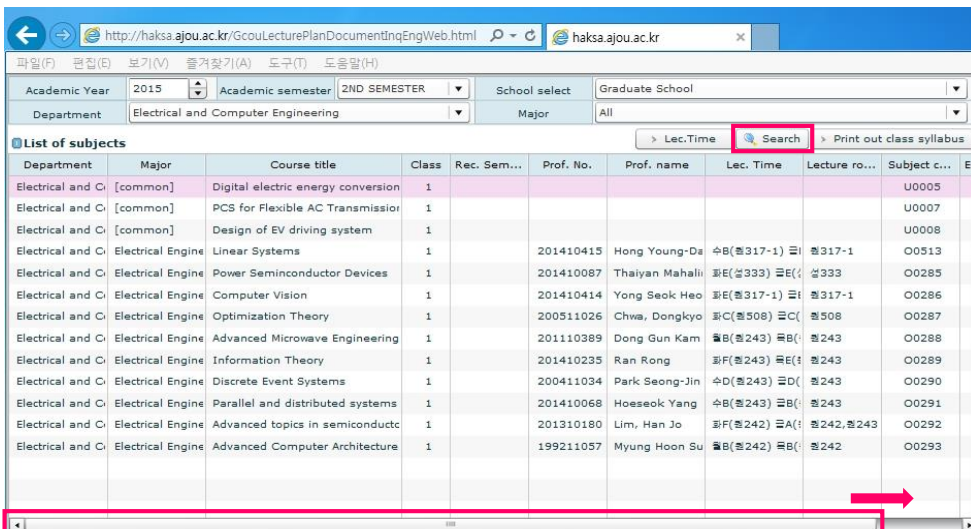
① Connect to the website for searching timetable(Lecture schedule)  
 (<http://haksa.ajou.ac.kr/GcouLecturePlanDocumentInqEngWeb.html>)



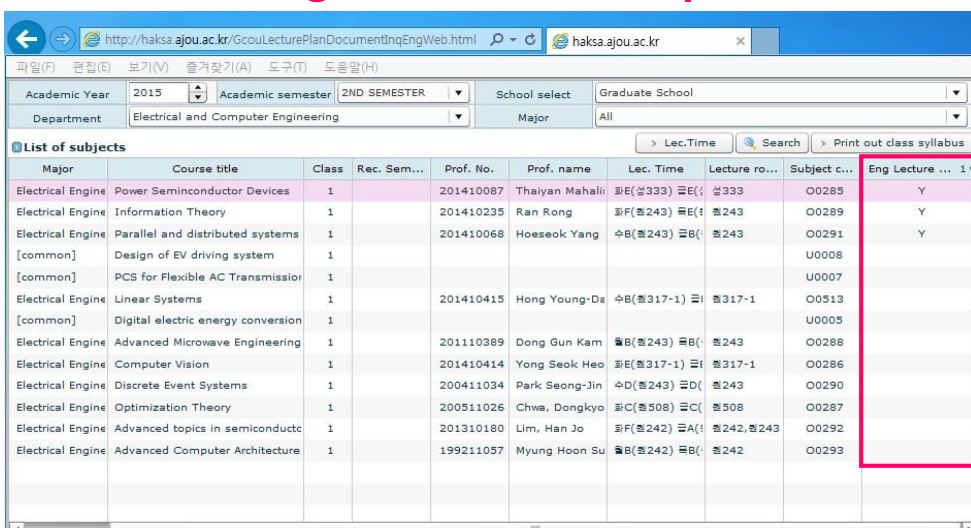
② Check the Academic year and semester, then Select the Department you affiliated in.



③ Click 'Search' button and Drag the scroll bar to the Right.



④ You can find the English Classes that opened in this semester.



'Y' means that the class will be served in English.